

e-Gro Q1 Release How To Guide

More information: egro.support@grodan.com



e-Gro Q1 release:

Optimized irrigation strategies including a redesigned Conditions Module

We hope you've had great first yields and are successfully entering your new harvest plans into the e-Gro. Collecting and analysing data is more important than ever when optimizing your growing strategy. This is why we do our best to help you continuously improve your crop performance by releasing updates.



The Q1 release focuses on the latest users experience trends according to our UX lead, Eloy Harst, and feedback from growers like you. The improved way data, insights and advice is captured and displayed will help to optimize your growing strategy. The quicker and easier you can see your climate and rootzone in combination with your yield predictions and your plant growth, the more analysis and time you save and more sustainably you grow.

Paulina Florax
Product Marketing Manager

Ralf Voncken
Product Owner e-Gro

What's new?

- A new WC Decrease Projection Model (beta)
- Redesigned Conditions Module
- New irrigation insights on the Conditions Module
- Improved YieldForecaster Model



Scan QR Code to see video about the release

A new WC Decrease Projection Model for an optimized water content strategy P3

Redesigned Conditions Module for improved user experience P5

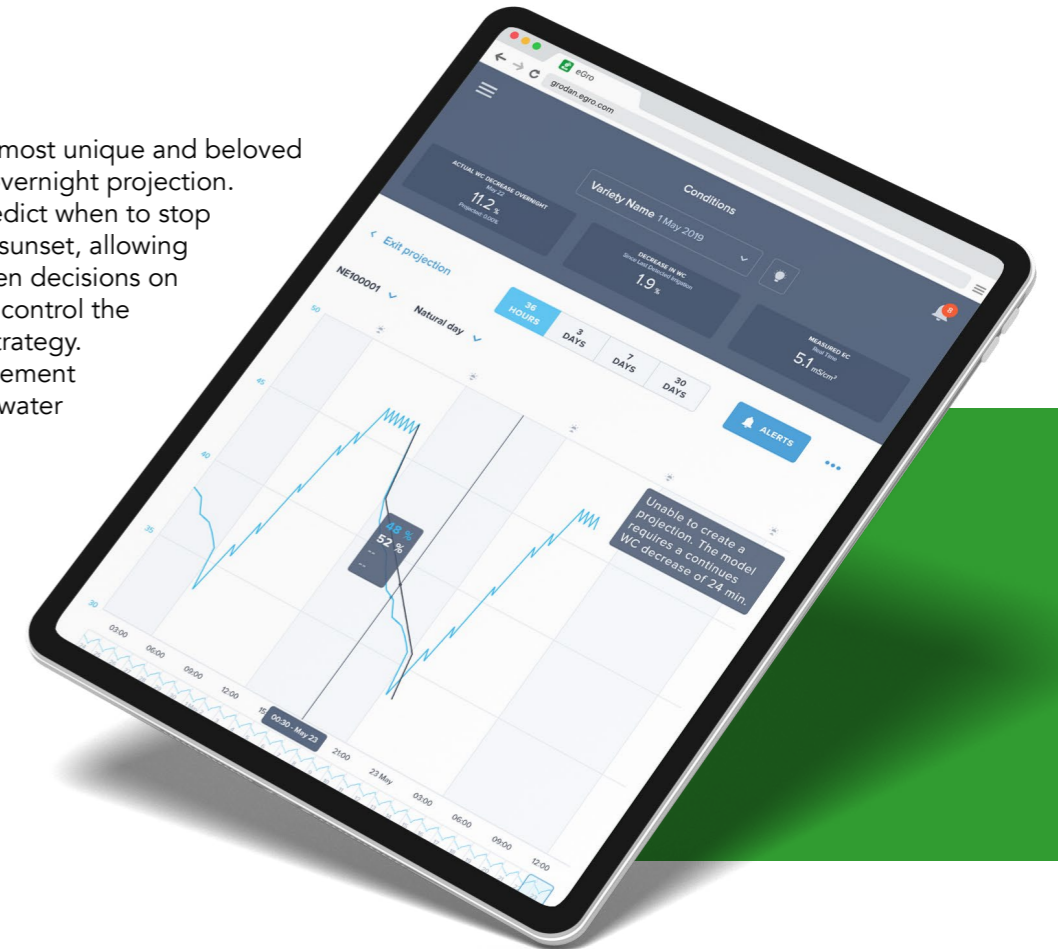
New irrigation insights for improved rootzone analysis P7

Improved model of e-Gro's YieldForecaster P8

What's next? P9

1 A new WC Decrease Projection Model for an optimized water content strategy

We've improved one of our most unique and beloved features: the WC decrease overnight projection. This feature helps you to predict when to stop watering your plants before sunset, allowing you to make more data-driven decisions on irrigation actions and better control the outcome of your irrigation strategy. If used correctly, this enhancement could help in more efficient water usage and a sustainable cultivation approach.



What's new?

The feature now uses a new calculation (AI-driven) model. The already available **classic version** is a mathematical calculation while the new, **beta version** uses an advanced Machine Learning algorithm. **Note:** In the next coming period we're going to research with our users how the beta model performs for further optimization. We will keep you updated on these developments through our Customer Support Department. This model will give you more control over your irrigation strategy and more accurate advice based on insights for the potential water content level over specific periods of time making use of historical and forecasted parameters.

How does it work?

We care about your preferences and know every grower interacts with our e-Gro platform differently. This is why we are giving you the option of whether or not you would like to switch over to the new calculation (default setting is the classic version). You can do this via:

- 1 - The Conditions Page by going to Graph Preferences
- 2 - And selecting either "Classic" or "Advanced - Beta".
- 3 - Here you also have the option to click the "Default WC decrease target" or "Custom WC decrease target" which allows you to define custom targets to the 1 decimal place and up to 30%.
- 4 - The graph will change according to your selection.
- 5 - The classic module shows three lines based on the last three irrigation moments detected, while the advanced beta version shows just one projection line based on the average behaviour over the span of three days.
- 6 - It reacts more quickly by displaying data from first detected irrigation after sunrise. Additionally, the data stamp is now shown above the graph instead of below the graph. This means no more scrolling!
- 7 - The Advanced - Beta model is also visible on your Dashboard Module.

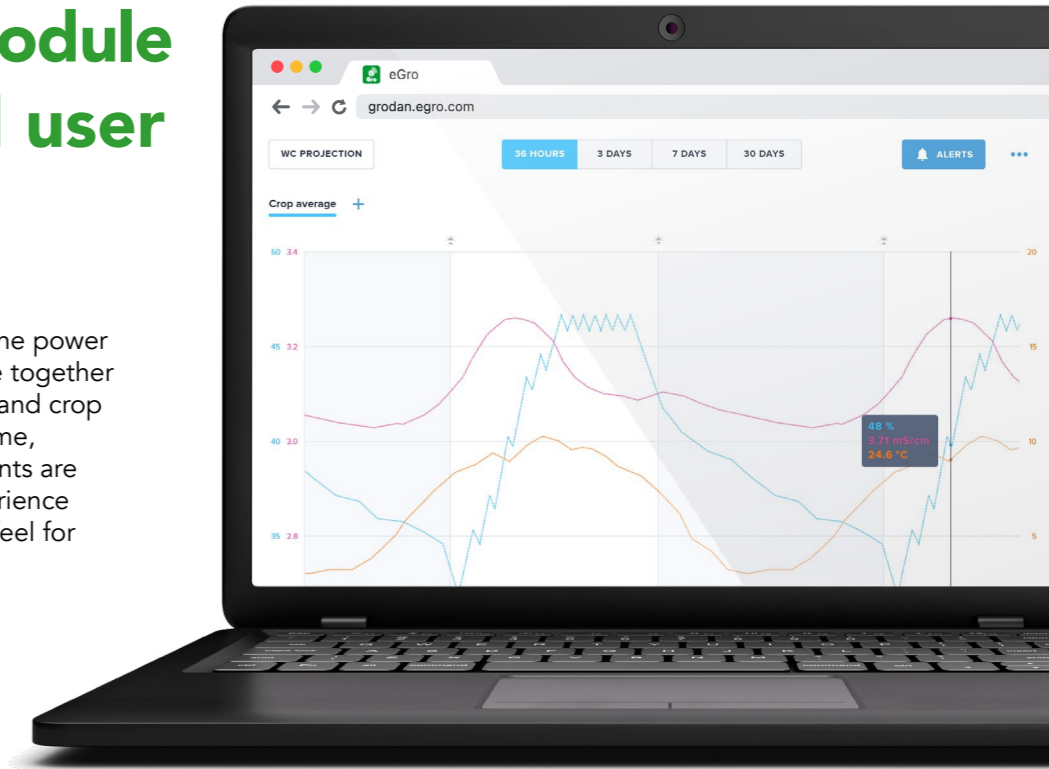


We care about your preferences and know every grower interacts with our e-Gro platform differently.

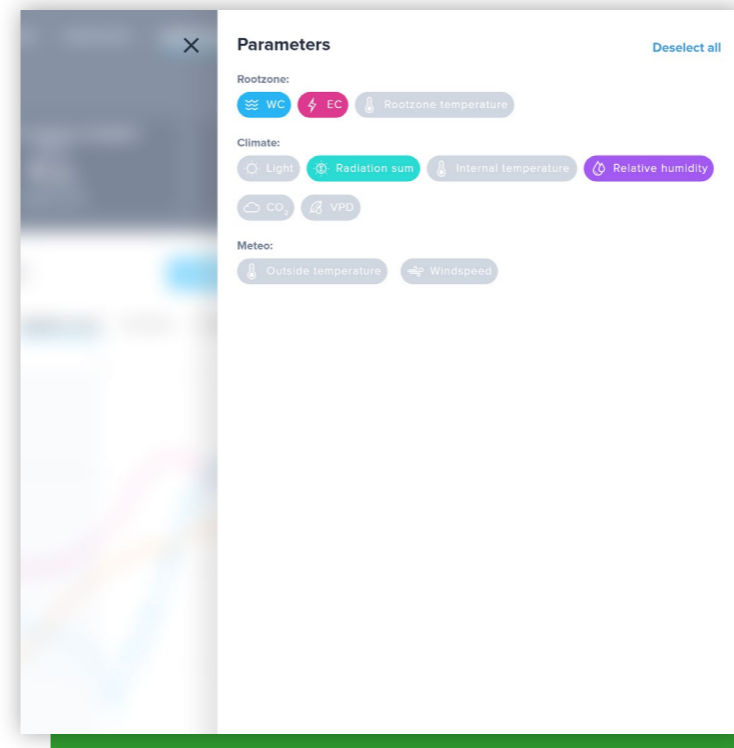
Paulina Florax
Product Marketing Manager

2 Redesigned Conditions Module for improved user experience

The Conditions Module gives you the power to analyse the rootzone and climate together so you can optimize your irrigation and crop steering strategies based on real-time, accurate data. The new improvements are focused on an improved daily experience and a more recognizable look and feel for easy analysis and ways of working.



How does it work?



Easier way of adding your data sources

You can now select individual data sources via a newly designed drawer menu which can be accessed via the new "+" icon. The menu includes crop average and up to ten options for sensors versus the previous seven options. Here you can select irrigation zones and individual climate zones. Previously, the page showed all available parameters which made it hard to determine what to focus on, but it is now possible to select only the rootzone and climate for simpler and focused viewing.

What's new?

Improved data analysis

We have implemented many changes that will help you read your data quicker and more intuitively with increased customization options. We've simplified and enhanced how your data is viewed by clearly displaying your data sources at the top of the graph and parameters at the bottom of the graph. The toggles are replaced by newly added parameters below the graph that you can easily click on and off. The data cards previously found below the graph are replaced with data which is readable on the graph itself via the hairline hover function.

Customized views

The Conditions Module is now more customizable than ever. Your last viewed data sources and parameters will be saved and will not be automatically reset to a default setting, so there is no need to manually create preferences in the graph preference overview. Preferences are saved zone, per user so every user and specialist within the same facility can set the preferences that are most important to them. No more need to dig deep to set your preferences.

Improved mobile experience

We know mobility is important to our growers so the entire interface has become more user-friendly for tablets and smartphones. The e-Gro mobile platform now includes bigger, more user friendly clickable elements and a new layout which doesn't require scrolling, so your data is visible in one quick glance.

3

New irrigation insights for improved rootzone analysis*

e-Gro captures now new irrigation insights, these are visible to analyse in your Conditions Module. These new insights will help you to better analyse the impact of your chosen irrigation strategy on the rootzone environment of the plants. Influencing the root-zone environment is important on a season and daily basis, so that the crop growth and production is steered in to the optimum direction. Additionally, Grodan and business support managers can also now better advise growers at distance as they now have more access to crucial information.

** Important note: these new irrigation insights parameters will be visible in your account after the release during the account-check by your dedicated Customer Success Manager.*

What's new and how does it work?

To view the new irrigation insights in your Conditions Module:

- 1 - You can add the new parameters (see list below) via the "+" icon on the bottom of the graph.
- 2 - The drawer menu will pop up and you can click which parameters you would like to add:
 - Drain percentage
 - Drain volume
 - Drain EC
 - Irrigation Volume
 - Irrigation EC

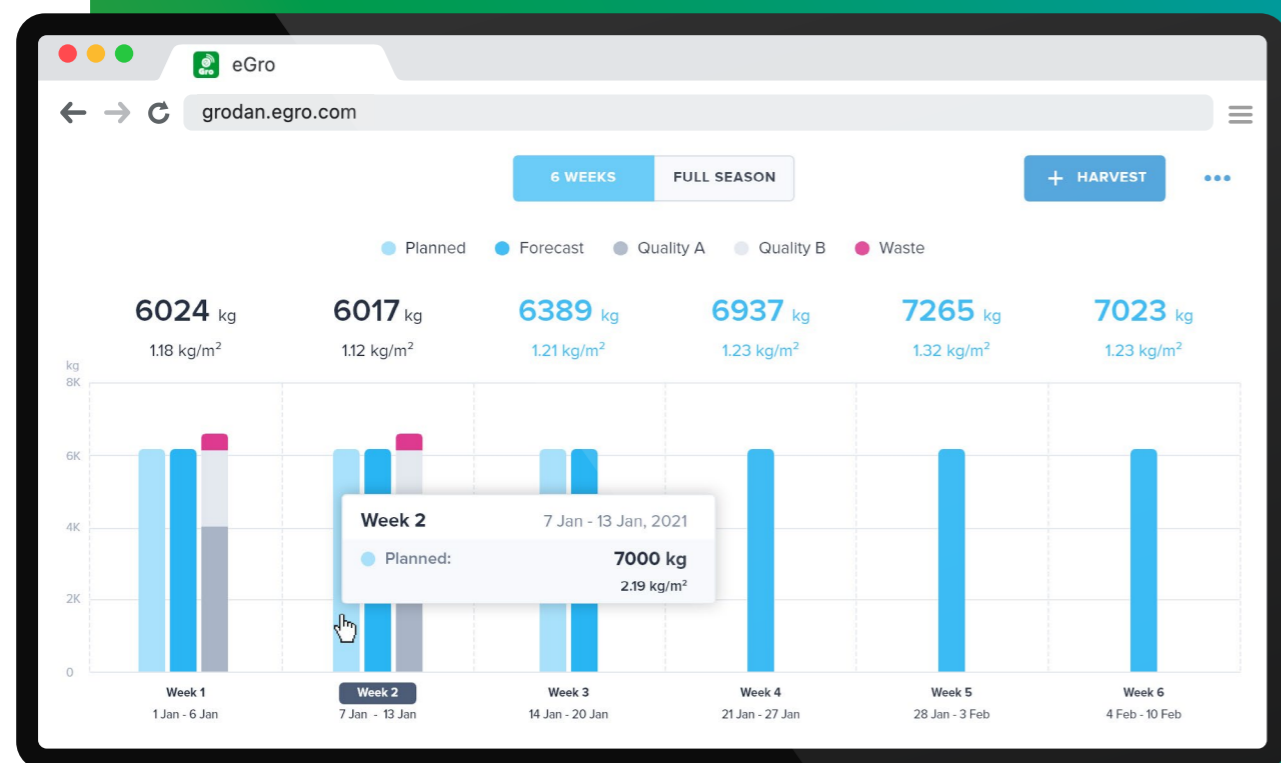
The new improvements are focused on an improved daily experience and a more recognizable look and feel for easy analysis and ways of working.

Ralf Voncken
Product Owner e-Gro



Improved model of e-Gro's YieldForecaster

The YieldForecaster module is more relevant than ever for this release as it is planned during the harvesting time and the weather in the coming months is typically volatile. This AI-driven model now has improved performance due to new technology implemented. The main difference will be in reduced resources for calculation and prediction so you no longer have to wait for updates. The new model strives for a more accuracy due to the new implemented neural technology.



How does it work?

The new model is automatically visible in your Production Module via the 1-2-3-4 week out forecaster. The predictions will be visible once you enter your harvest information. The new model is based on good, quality data so be sure to enter your weekly harvest plans and realized harvest numbers consistently.



What's next?

We continue to future proof Grodan's e-Gro platform and we have some more exciting things in development. We will keep providing quarterly releases with the next release planned for early July. This release will focus on sweet pepper optimization and many more. It will also feature a new, dedicated space for support information. With these new features we strive to continuously help you improve your growing strategy and achieve the best results possible.

Rockwool BV / Grodan

Industrieweg 15
P.O. Box 1160, 6040 KD Roermond
The Netherlands

t +31 (0)475 35 30 20
f +31 (0)475 35 37 16
e info@grodan.com
i www.grodan.com
in www.linkedin.com/company/grodan
🐦 www.twitter.com/grodan
📷 [@grodaninternational](https://www.instagram.com/grodaninternational)

ROCKWOOL® and Grodan® are registered trademarks of the ROCKWOOL Group.

Grodan is the only supplier of stone wool substrates with the EU-Eco label.

